

# ***DINIS***

***TRANSPORT & STORAGE EQUIPMENT***

# **Storage trolleys**

**CATALOGUE D19**



**[www.dinis.bg](http://www.dinis.bg)**

1618 Sofia  
227A Tcar Boris III Blvd.  
e-mail: [info@dinis.bg](mailto:info@dinis.bg)  
Phone: 02/ 955 62 00

# TABLE WORKING TROLLEY **TWT-300-1000x600-GKB**

The Table working trolley is equipment with two levels made of particle boards. There is a stand intended for monitor of computer on the top level. The computer box could be placed on the bottom level. The operator always has ready for work mobile place which could move where is necessary. The equipment is suitable for use in big production and warehouse premises.



**TWT-300-GKB**

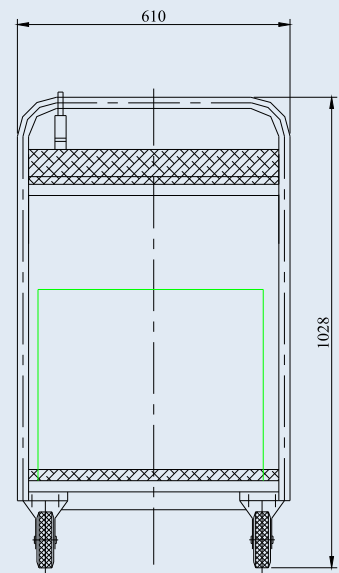
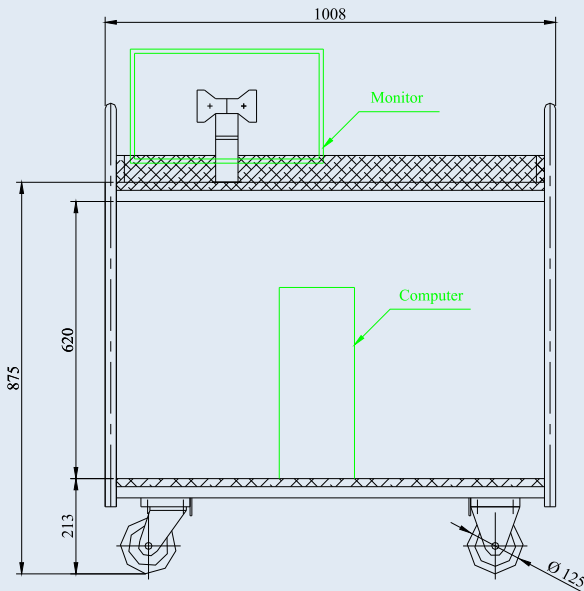
specialized  
trolley



Standard solid rubber tyre,  
pressed steel rim  
LE-VE 125R



Standard solid rubber tyre,  
pressed steel rim  
B-VE 125R



## TABLE WORKING TROLLEY

Total load capacity, kg  
Shelf size, mm  
Distance between shelves, mm  
Height to the bottom shelf, mm  
Height to the top shelf, mm  
Load capacity per shelf, kg  
Wheel diameter, mm  
Overall dimensions, mm  
- length  
- width  
- height  
Dead weight, kg

## TWT-300-1000x600-GKB

**300**  
958x560  
620  
213  
875  
150  
125  
1008  
610  
1028  
26.7