

Flanged wheels and castors



Selection tool


Flanged wheels and castors



| Series | SPKGSP0 | SPK | SPKVS |
|---|----------------------|----------------|----------------------|
| Flange / double flange | Flange, single sided | | |
| Tread / wheel centre | Cast nylon | Grey cast iron | Heat-treatable steel |
| Tread and tyre hardness | 80 Shore D | 180–220 HB | 190–230 HB |
| Wheel Ø | 50–250 mm | 50–250 mm | 50–400 mm |
| Load capacity up to | 3,000 kg | 3,500 kg | 9,000 kg |
| Suitability for high speeds | ■ ■ ■ ■ ■ | ■ ■ ■ ■ ■ | ■ ■ ■ ■ ■ |
| Drive wheel available | upon request | – | ✓ (see page 547) |
| For a description of the wheel, refer to | page 526 | page 528 | page 530 |
| For information about fixed castors, refer to | page 527 | page 529 | page 531 |

■ ■ ■ ■ ■ excellent
 ■ ■ ■ ■ ■ very good
 ■ ■ ■ ■ good
 ■ ■ satisfactory
 ■ adequate
 ✓ yes
 – no



| DSPKGSPO | DSPK |
|---|---|
| Double flange | |
| Cast nylon | Heat-treatable steel |
| 80 Shore D | 190–230 HB |
| 50–200 mm | 50–200 mm |
| 700 kg | 1,200 kg |
|  |  |
| upon request | upon request |
| page 532 | page 534 |
| page 533 | page 535 |

SPKGSP0 series

Cast nylon flanged wheels



220–3,000 kg

Tread and tyre hardness
 80 Shore D

Smooth operation / floor preservation
 satisfactory

Rolling resistance
 excellent

Wear resistance
 very good

- Wheel:**
- high-quality cast nylon, impact resistant, hardness 80 Shore D
 - 3° taper tread to axle
 - very low rolling resistance
 - high abrasion resistance
 - colour natural beige

- Other features:**
- high chemical resistance to many aggressive substances
 - operating temperature: -20 °C to +80 °C, reduced load capacity over +35 °C
 - the load capacities provided in the table refer to the allocation of flanged wheels to rail profiles in accordance with DIN 536 specified below (crane rail standard):
 SPKGSPO 50G–SPKGSPO 200K,
 SPKGSPO 250K: A45
 SPKGSPO 201K, SPKGSPO 251K: A55

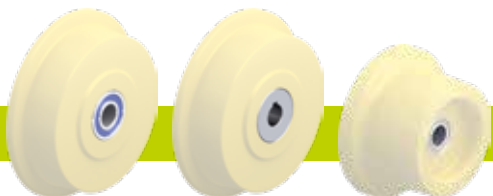
- Additional details:**
- wheel series: page 74
 - tread: page 57
 - bearing types: page 84–85
 - chemical resistance: page 51

| Flanged wheels | Wheel Ø without flange (D) [mm] | Wheel Ø incl. flange (D1) [mm] | Wheel width (T2) [mm] | Running width (T3) [mm] | Flange location (T4) [mm] | Load capacity [kg] | Bearing type | Axle bore Ø (d) [mm] | Hub length (T1) [mm] |
|----------------|---------------------------------|--------------------------------|-----------------------|-------------------------|---------------------------|--------------------|--------------|----------------------|----------------------|
| SPKGSPO 50G | 50 | 62 | 32 | 26 | 6 | 220 | plain bore | 15 | 32 |
| SPKGSPO 50K | 50 | 62 | 32 | 26 | 6 | 220 | ball bearing | 15 | 32 |
| SPKGSPO 75G | 75 | 100 | 40 | 30 | 13.5 | 380 | plain bore | 20 | 47 |
| SPKGSPO 75K | 75 | 100 | 40 | 30 | 13.5 | 380 | ball bearing | 20 | 47 |
| SPKGSPO 100K | 100 | 125 | 46 | 36 | 13 | 600 | ball bearing | 20 | 52 |
| SPKGSPO 125K | 125 | 145 | 46 | 36 | 13 | 750 | ball bearing | 20 | 52 |
| SPKGSPO 150K | 150 | 175 | 46 | 36 | 13 | 900 | ball bearing | 20 | 52 |
| SPKGSPO 200K | 200 | 230 | 53 | 38 | 20 | 1,300 | ball bearing | 25 | 60 |
| SPKGSPO 201K | 200 | 230 | 80 | 60 | 25 | 2,500 | ball bearing | 40 | 90 |
| SPKGSPO 250K | 250 | 300 | 65 | 50 | 17.5 | 2,100 | ball bearing | 30 | 70 |
| SPKGSPO 251K | 250 | 300 | 80 | 60 | 25 | 3,000 | ball bearing | 40 | 90 |

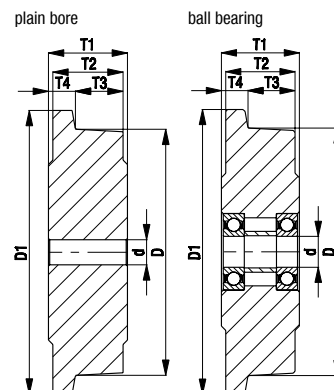
Other dimensions available upon request

14

Versions / options



| | with stainless steel ball bearing in the wheel hub | drive wheel with hub keyway | other versions |
|----------------------------|--|-----------------------------|----------------|
| Technical description page | 84 | | |
| Product code suffix | -XK | SPKGSPO series | |
| Available for | upon request* | upon request | upon request |



* Some dimensions may result in reduced load capacities

BS-SPKGSP0 series

Welded steel heavy-duty castors, with cast nylon flanged wheel



600–3,000 kg

Bracket: BS series

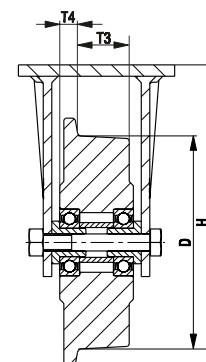
- particularly robust welded steel construction
- zinc-plated, yellow-passivated, Cr6-free

Wheel: SPKGSP0 series

- high-quality cast nylon, impact resistant, hardness 80 Shore D, colour natural beige
- the load capacities provided in the table refer to the allocation of flanged wheels to rail profiles in accordance with DIN 536 specified below (crane rail standard):
SPKGSP0 100K–SPKGSP0 200K,
SPKGSP0 250K: A45
SPKGSP0 201K, SPKGSP0 251K: A55

Additional details:

- wheel series: page 526
- bearing types: page 84–85



| Fixed castors | Wheel Ø without flange (D) [mm] | Wheel Ø incl. flange [mm] | Wheel width [mm] | Running width (T3) [mm] | Flange location (T4) [mm] | Load capacity [kg] | Bearing type | Total height (H) [mm] | Plate size [mm] | Bolt hole spacing [mm] | Bolt hole Ø [mm] |
|------------------------|---------------------------------|---------------------------|------------------|-------------------------|---------------------------|--------------------|--------------|-----------------------|-----------------|------------------------|------------------|
| BS-SPKGSP0 100K | 100 | 125 | 46 | 36 | 13 | 600 | ball bearing | 157 | 140 x 110 | 105 x 75–80 | 11 |
| BS-SPKGSP0 125K | 125 | 145 | 46 | 36 | 13 | 750 | ball bearing | 170 | 140 x 110 | 105 x 75–80 | 11 |
| BS-SPKGSP0 150K | 150 | 175 | 46 | 36 | 13 | 900 | ball bearing | 200 | 140 x 110 | 105 x 75–80 | 11 |
| BS-SPKGSP0 200K | 200 | 230 | 53 | 38 | 20 | 1,300 | ball bearing | 245 | 140 x 110 | 105 x 75–80 | 11 |
| BS-SPKGSP0 201K | 200 | 230 | 80 | 60 | 25 | 2,500 | ball bearing | 245 | 175 x 140 | 140 x 105 | 14 |
| BS-SPKGSP0 250K | 250 | 300 | 65 | 50 | 17.5 | 2,100 | ball bearing | 305 | 175 x 140 | 140 x 105 | 14 |
| BS-SPKGSP0 251K | 250 | 300 | 80 | 60 | 25 | 3,000 | ball bearing | 305 | 200 x 160 | 160 x 120 | 14 |

SPK series

Cast iron flanged wheels



400–3,500 kg

Tread and tyre hardness
 180–220 HB

Smooth operation / floor preservation
 sufficient

Rolling resistance
 excellent

Wear resistance
 excellent

- Wheel:**
- rugged grey cast iron, hardness 180–220 HB
 - with grease nipple from wheel Ø 125 mm
 - machined flange and tread
 - 3° taper tread to axle
 - extremely low rolling resistance
 - outstanding wear resistance
 - lacquered, colour silver

- Other features:**
- chemical resistance to many aggressive substances
 - operating temperature:
 plain bore version: -100 °C to +600 °C, load capacity reduced by 50% at +600 °C
 ball bearing version: -20 °C to +120 °C
 heat-resistant ball bearing version: -30 °C to +300 °C, load capacity reduced by 50% at +300 °C
 - provide adequate lubrication on a regular basis for plain bore version
 - the load capacities provided in the table refer to the allocation of flanged wheels to rail profiles in accordance with DIN 536 specified below (crane rail standard):
 SPK 50G–SPK 200K, SPK 250G, SPK 250K: A45
 SPK 201K, SPK 251K: A55

- Additional details:**
- wheel series: page 74
 - tread: page 59
 - bearing types: page 84–85
 - chemical resistance: page 51

| Flanged wheels | Wheel Ø without flange (D) [mm] | Wheel Ø incl. flange (D1) [mm] | Wheel width (T2) [mm] | Running width (T3) [mm] | Flange location (T4) [mm] | Load capacity up to +70 °C [kg] | Bearing type | Axle bore Ø (d) [mm] | Hub length (T1) [mm] |
|----------------|---------------------------------|--------------------------------|-----------------------|-------------------------|---------------------------|---------------------------------|--------------|----------------------|----------------------|
| SPK 50G | 50 | 62 | 32 | 26 | 6 | 400 | plain bore | 15 | 32 |
| SPK 75G | 75 | 100 | 40 | 30 | 13.5 | 700 | plain bore | 20 | 47 |
| SPK 75K | 75 | 100 | 40 | 30 | 13.5 | 700 | ball bearing | 20 | 47 |
| SPK 100G | 100 | 125 | 46 | 36 | 13 | 800 | plain bore | 20 | 52 |
| SPK 100K | 100 | 125 | 46 | 36 | 13 | 800 | ball bearing | 20 | 52 |
| SPK 125G | 125 | 145 | 46 | 36 | 13 | 900 | plain bore | 20 | 52 |
| SPK 125K | 125 | 145 | 46 | 36 | 13 | 900 | ball bearing | 20 | 52 |
| SPK 150G | 150 | 175 | 46 | 36 | 13 | 1,000 | plain bore | 20 | 52 |
| SPK 150K | 150 | 175 | 46 | 36 | 13 | 1,000 | ball bearing | 20 | 52 |
| SPK 180G | 180 | 210 | 46 | 36 | 13 | 1,200 | plain bore | 30 | 52 |
| SPK 180K | 180 | 210 | 46 | 36 | 13 | 1,200 | ball bearing | 20 | 52 |
| SPK 200G | 200 | 230 | 53 | 38 | 20 | 1,500 | plain bore | 30 | 60 |
| SPK 200K | 200 | 230 | 53 | 38 | 10 | 1,500 | ball bearing | 25 | 60 |
| SPK 201K | 200 | 230 | 80 | 60 | 20 | 3,000 | ball bearing | 40 | 90 |
| SPK 250G | 250 | 300 | 65 | 50 | 17.5 | 2,500 | plain bore | 40 | 70 |
| SPK 250K | 250 | 300 | 65 | 50 | 17.5 | 2,500 | ball bearing | 30 | 70 |
| SPK 251K | 250 | 300 | 80 | 60 | 25 | 3,500 | ball bearing | 40 | 90 |

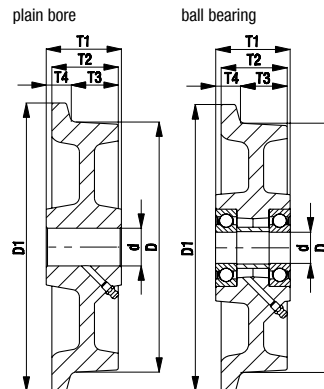
14

Versions / options



with heat-resistant ball bearing up to +300 °C

| | |
|----------------------------|------------------------------------|
| Technical description page | 84 |
| Product code suffix | -IK |
| Available for | ball bearing versions upon request |



BS-SPK series

Welded steel heavy-duty castors, with cast iron flanged wheel

800–3,500 kg

Bracket: BS series

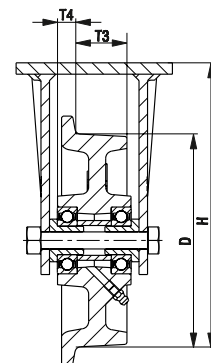
- particularly robust welded steel construction
- zinc-plated, yellow-passivated, Cr6-free

Wheel: SPK series

- rugged grey cast iron, hardness 180–220 HB, with grease nipple from wheel \varnothing 125 mm, lacquered, colour silver
- the load capacities provided in the table refer to the allocation of flanged wheels to rail profiles in accordance with DIN 536 specified below (crane rail standard):
SPK 100K–SPK 200K, SPK 250K: A45
SPK 201K, SPK 251K: A55

Additional details:

- wheel series: page 528
- bearing types: page 84–85



| Fixed castors | Wheel \varnothing without flange (D) [mm] | Wheel \varnothing incl. flange [mm] | Wheel width [mm] | Running width (T3) [mm] | Flange location (T4) [mm] | Load capacity [kg] | Bearing type | Total height (H) [mm] | Plate size [mm] | Bolt hole spacing [mm] | Bolt hole \varnothing [mm] |
|---------------|---|---------------------------------------|------------------|-------------------------|---------------------------|--------------------|--------------|-----------------------|-----------------|------------------------|------------------------------|
| BS-SPK 100K | 100 | 125 | 46 | 36 | 13 | 800 | ball bearing | 157 | 140 x 110 | 105 x 75–80 | 11 |
| BS-SPK 125K | 125 | 145 | 46 | 36 | 13 | 900 | ball bearing | 170 | 140 x 110 | 105 x 75–80 | 11 |
| BS-SPK 150K | 150 | 175 | 46 | 36 | 13 | 1,000 | ball bearing | 200 | 140 x 110 | 105 x 75–80 | 11 |
| BS-SPK 200K | 200 | 230 | 53 | 38 | 10 | 1,500 | ball bearing | 245 | 140 x 110 | 105 x 75–80 | 11 |
| BS-SPK 201K | 200 | 230 | 80 | 60 | 20 | 3,000 | ball bearing | 245 | 175 x 140 | 140 x 105 | 14 |
| BS-SPK 250K | 250 | 300 | 65 | 50 | 17.5 | 2,500 | ball bearing | 305 | 175 x 140 | 140 x 105 | 14 |
| BS-SPK 251K | 250 | 300 | 80 | 60 | 25 | 3,500 | ball bearing | 305 | 200 x 160 | 160 x 120 | 14 |

Versions / options



with heat-resistant ball bearing up to +300 °C

Technical description page

84

Product code suffix

-IK

Available for

upon request*

* Load capacity see page 528

SPKVS series

Solid steel flanged wheels



500–9,000 kg

Tread and tyre hardness
 190–230 HB

Smooth operation / floor preservation
 sufficient

Rolling resistance
 excellent

Wear resistance
 excellent

- Wheel:**
- heat-treatable steel, machined, hardness 190–230 HB
 - lightly-oiled surface
 - 3° taper tread to axle
 - extremely low rolling resistance
 - extremely high static and dynamic load capacity

- Other features:**
- chemical resistance to many aggressive substances
 - operating temperature:
 ball bearing version: -20 °C to +120 °C
 heat-resistant ball bearing version: -30 °C to +300 °C, load capacity reduced by 50% at +300 °C
 - the load capacities provided in the table refer to the allocation of flanged wheels to rail profiles in accordance with DIN 536 specified below (crane rail standard):
 SPKVS 50K–SPKVS 200K: A45
 SPKVS 250K: A55
 SPKVS 300K–SPKVS 400K: A65

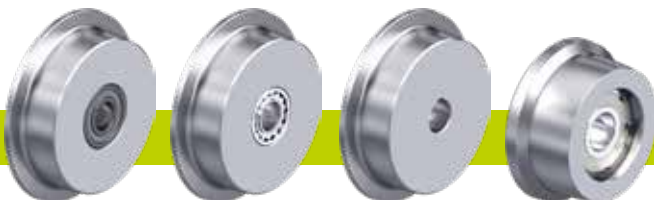
- Additional details:**
- wheel series: page 74
 - tread: page 59
 - bearing types: page 84–85
 - chemical resistance: page 51

| Flanged wheels | Wheel Ø without flange (D) [mm] | Wheel Ø incl. flange (D1) [mm] | Wheel width (T2) [mm] | Running width (T3) [mm] | Flange location (T4) [mm] | Load capacity [kg] | Bearing type | Axle bore Ø (d) [mm] | Hub length (T1) [mm] |
|----------------|---------------------------------|--------------------------------|-----------------------|-------------------------|---------------------------|--------------------|--------------|----------------------|----------------------|
| SPKVS 50K | 50 | 62 | 40 | 30 | 10 | 500 | ball bearing | 15 | 40 |
| SPKVS 75K | 75 | 100 | 40 | 30 | 10 | 800 | ball bearing | 20 | 40 |
| SPKVS 100K | 100 | 125 | 50 | 40 | 15 | 1,200 | ball bearing | 25 | 50 |
| SPKVS 125K | 125 | 150 | 50 | 40 | 15 | 1,500 | ball bearing | 25 | 50 |
| SPKVS 150K | 150 | 180 | 60 | 48 | 18 | 2,000 | ball bearing | 30 | 60 |
| SPKVS 200K | 200 | 240 | 60 | 48 | 18 | 2,500 | ball bearing | 35 | 60 |
| SPKVS 250K | 250 | 290 | 75 | 60 | 22.5 | 4,000 | ball bearing | 45 | 75 |
| SPKVS 300K | 300 | 345 | 90 | 72 | 27 | 7,000 | ball bearing | 60 | 90 |
| SPKVS 400K | 400 | 445 | 90 | 72 | 27 | 9,000 | ball bearing | 80 | 90 |

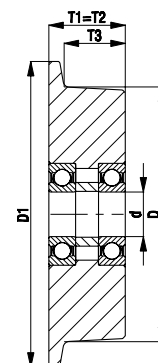
Other dimensions available upon request

14

Versions / options

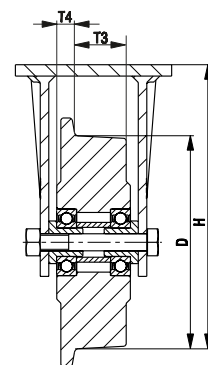


| | with heat-resistant ball bearing up to +300 °C | with spherical roller bearing | drive wheels with hub keyway | other versions |
|----------------------------|--|-------------------------------|------------------------------|----------------|
| Technical description page | 84 | 85 | 76 | |
| Product code suffix | -IK | -PR | SPKVSN series | |
| Available for | upon request | upon request | see page 547 | upon request |



BS-SPKVS series

Welded steel heavy-duty castors, with solid steel flanged wheel



1,200–9,000 kg

Bracket: BS series

- particularly robust welded steel construction
- zinc-plated, yellow-passivated, Cr6-free

Wheel: SPKVS series

- heat-treatable steel, hardness 190–230 HB
- the load capacities provided in the table refer to the allocation of flanged wheels to rail profiles in accordance with DIN 536 specified below (crane rail standard):
SPKVS 100K–SPKVS 200K: A45
SPKVS 250K: A55
SPKVS 300K–SPKVS 400K: A65

Additional details:

- wheel series: page 530
- bearing types: page 84–85

| Fixed castors | Wheel Ø without flange (D) [mm] | Wheel Ø incl. flange [mm] | Wheel width [mm] | Running width (T3) [mm] | Flange location (T4) [mm] | Load capacity [kg] | Bearing type | Total height (H) [mm] | Plate size [mm] | Bolt hole spacing [mm] | Bolt hole Ø [mm] |
|----------------------|---------------------------------|---------------------------|------------------|-------------------------|---------------------------|--------------------|--------------|-----------------------|-----------------|------------------------|------------------|
| BS-SPKVS 100K | 100 | 125 | 50 | 40 | 15 | 1,200 | ball bearing | 157 | 140 x 110 | 105 x 75–80 | 11 |
| BS-SPKVS 125K | 125 | 150 | 50 | 40 | 15 | 1,500 | ball bearing | 170 | 140 x 110 | 105 x 75–80 | 11 |
| BS-SPKVS 150K | 150 | 180 | 60 | 48 | 18 | 1,750 | ball bearing | 200 | 140 x 110 | 105 x 75–80 | 11 |
| BS-SPKVS 200K | 200 | 240 | 60 | 48 | 18 | 2,500 | ball bearing | 245 | 140 x 110 | 105 x 75–80 | 11 |
| BS-SPKVS 250K | 250 | 290 | 75 | 60 | 22.5 | 4,000 | ball bearing | 305 | 175 x 140 | 140 x 105 | 14 |
| BS-SPKVS 300K | 300 | 345 | 90 | 72 | 27 | 6,000 | ball bearing | 380 | 255 x 200 | 210 x 160 | 18 |
| BS-SPKVS 400K | 400 | 445 | 90 | 72 | 27 | 9,000 | ball bearing | 480 | 400 x 300 | 340 x 240 | 26 |

DSPKGSP0 series

Twin cast nylon flanged wheels



50–700 kg

Tread and tyre hardness



80 Shore D

Smooth operation / floor preservation



satisfactory

Rolling resistance



excellent

Wear resistance



very good

Wheel:

- high-quality cast nylon, impact resistant, hardness 80 Shore D
- V-shaped tread (for angular steel)
- very low rolling resistance
- high abrasion resistance
- colour natural beige

Other features:

- high chemical resistance to many aggressive substances
- operating temperature: -20 °C to +80 °C, reduced load capacity over +35 °C
- consider the surface pressure on sensitive floors due to high point loads

Additional details:

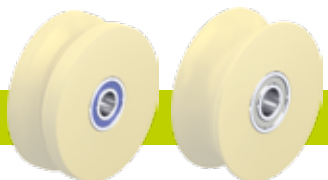
- wheel series: page 75
- tread: page 57
- bearing types: page 84–85
- chemical resistance: page 51

| Twin flanged wheels | Wheel Ø | Wheel width | Insertion width | Load capacity | Bearing type | Axle bore Ø | Hub length |
|---------------------|----------|-------------|-----------------|---------------|--------------|-------------|------------|
| | (D) [mm] | (T2) [mm] | (B) [mm] | [kg] | | (d) [mm] | (T1) [mm] |
| DSPKGSP0 50G | 50 | 18 | 12 | 50 | plain bore | 10 | 18 |
| DSPKGSP0 50K | 50 | 18 | 12 | 50 | ball bearing | 10 | 18 |
| DSPKGSP0 75G | 75 | 22 | 16 | 75 | plain bore | 12 | 22 |
| DSPKGSP0 75K | 75 | 22 | 16 | 75 | ball bearing | 12 | 22 |
| DSPKGSP0 75/15K | 75 | 22 | 16 | 75 | ball bearing | 15 | 22 |
| DSPKGSP0 100K | 100 | 24 | 18 | 150 | ball bearing | 15 | 24 |
| DSPKGSP0 101K * | 100 | 40 | 20 | 400 | ball bearing | 15 | 40 |
| DSPKGSP0 120K | 120 | 33 | 25 | 200 | ball bearing | 20 | 33 |
| DSPKGSP0 125K * | 125 | 50 | 25 | 700 | ball bearing | 20 | 50 |
| DSPKGSP0 150K | 150 | 33 | 25 | 400 | ball bearing | 20 | 33 |
| DSPKGSP0 200K | 200 | 33 | 25 | 500 | ball bearing | 20 | 33 |

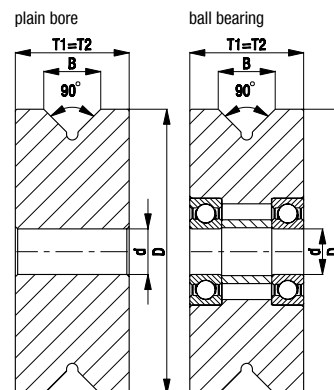
* Wheels with wide tread that can also run outside of the rails.

Other dimensions available upon request

Versions / options



| | with stainless steel ball bearing in the wheel hub | other versions |
|----------------------------|--|----------------|
| Technical description page | 84 | |
| Product code suffix | -XK | |
| Available for | upon request | upon request |



BH-DSPKGSP0 series

Pressed steel castors, heavy-duty brackets, with cast nylon double flanged wheel



75–700 kg

Bracket: BH series

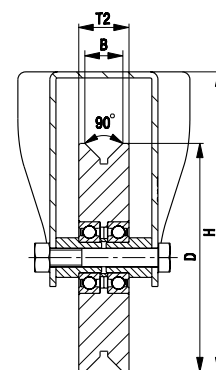
- pressed steel, zinc-plated, blue-passivated, Cr6-free
- heavy fork and top plate

Wheel: DSPKGSP0 series

- high-quality cast nylon, impact resistant, hardness 80 Shore D, colour natural beige

Additional details:

- wheel series: page 532
- bearing types: page 84–85



| Fixed castors | Wheel Ø without flange (D) [mm] | Wheel width (T2) [mm] | Insertion width (B) [mm] | Load capacity [kg] | Bearing type | Total height (H) [mm] | Plate size [mm] | Bolt hole spacing [mm] | Bolt hole Ø [mm] |
|-----------------------------|---------------------------------|-----------------------|--------------------------|--------------------|--------------|-----------------------|-----------------|------------------------|------------------|
| BH-DSPKGSP0 75K | 75 | 22 | 16 | 75 | ball bearing | 118 | 100 x 85 | 80 x 60 | 9 |
| BH-DSPKGSP0 100K-1 | 100 | 24 | 18 | 150 | ball bearing | 140 | 100 x 85 | 80 x 60 | 9 |
| BH-DSPKGSP0 100K-3 | 100 | 24 | 18 | 150 | ball bearing | 140 | 140 x 110 | 105 x 75–80 | 11 |
| BH-DSPKGSP0 101K-1 * | 100 | 40 | 20 | 400 | ball bearing | 140 | 100 x 85 | 80 x 60 | 9 |
| BH-DSPKGSP0 101K-3 * | 100 | 40 | 20 | 400 | ball bearing | 140 | 140 x 110 | 105 x 75–80 | 11 |
| BH-DSPKGSP0 120K-1 | 120 | 33 | 25 | 200 | ball bearing | 162 | 100 x 85 | 80 x 60 | 9 |
| BH-DSPKGSP0 120K-3 | 120 | 33 | 25 | 200 | ball bearing | 162 | 140 x 110 | 105 x 75–80 | 11 |
| BH-DSPKGSP0 125K * | 125 | 50 | 25 | 700 | ball bearing | 170 | 140 x 110 | 105 x 75–80 | 11 |
| BH-DSPKGSP0 150K | 150 | 33 | 25 | 400 | ball bearing | 197 | 140 x 110 | 105 x 75–80 | 11 |
| BH-DSPKGSP0 200K | 200 | 33 | 25 | 500 | ball bearing | 245 | 140 x 110 | 105 x 75–80 | 11 |

* Wheels with wide tread that can also run outside of the rails.

DSPK series

Twin solid steel flanged wheels



120–1,200 kg

Tread and tyre hardness

190–230 HB

Smooth operation / floor preservation

sufficient

Rolling resistance

excellent

Wear resistance

excellent

Wheel:

- heat-treatable steel, machined, hardness 190–230 HB
- lightly-oiled surface
- V-shaped tread (for angular steel)
- extremely low rolling resistance
- outstanding wear resistance
- extremely high static and dynamic load capacity

Other features:

- chemical resistance to many aggressive substances
- operating temperature: -20 °C to +120 °C
- consider the surface pressure on sensitive floors due to high point loads

Additional details:

- wheel series: page 75
- tread: page 59
- bearing types: page 84–85
- chemical resistance: page 51

| Twin flanged wheels | Wheel Ø | Wheel width | Insertion width | Load capacity | Bearing type | Axle bore Ø | Hub length |
|---------------------|----------|-------------|-----------------|---------------|--------------|-------------|------------|
| | (D) [mm] | (T2) [mm] | (B) [mm] | [kg] | | (d) [mm] | (T1) [mm] |
| DSPK 50K | 50 | 18 | 12 | 120 | ball bearing | 10 | 18 |
| DSPK 75K | 75 | 22 | 16 | 250 | ball bearing | 12 | 22 |
| DSPK 75/15K | 75 | 22 | 16 | 250 | ball bearing | 15 | 22 |
| DSPK 100K | 100 | 24 | 18 | 300 | ball bearing | 15 | 24 |
| DSPK 101K * | 100 | 40 | 20 | 600 | ball bearing | 15 | 40 |
| DSPK 120K | 120 | 33 | 25 | 600 | ball bearing | 20 | 33 |
| DSPK 125K * | 125 | 50 | 25 | 1,200 | ball bearing | 20 | 50 |
| DSPK 150K | 150 | 33 | 25 | 800 | ball bearing | 20 | 33 |
| DSPK 200K | 200 | 33 | 25 | 1,000 | ball bearing | 20 | 33 |

* Wheels with wide tread that can also run outside of the rails.

Other dimensions available upon request

14

Versions / options



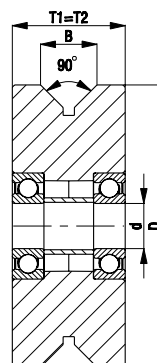
other versions

Technical description page

Product code suffix

Available for

upon request



BH-DSPK series

Pressed steel castors, heavy-duty brackets, with solid steel double flanged wheel



250–900 kg

Bracket: BH series

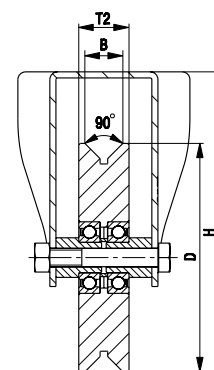
- pressed steel, zinc-plated, blue-passivated, Cr6-free
- heavy fork and top plate

Wheel: DSPK series

- heat-treatable steel, hardness 190–230 HB

Additional details:

- wheel series: page 534
- bearing types: page 84–85



| Fixed castors | Wheel Ø (D) [mm] | Wheel width (T2) [mm] | Insertion width (B) [mm] | Load capacity [kg] | Bearing type | Total height (H) [mm] | Plate size [mm] | Bolt hole spacing [mm] | Bolt hole Ø [mm] |
|-------------------------|---------------------|--------------------------|-----------------------------|-----------------------|--------------|--------------------------|--------------------|---------------------------|---------------------|
| BH-DSPK 75K | 75 | 22 | 16 | 250 | ball bearing | 118 | 100 x 85 | 80 x 60 | 9 |
| BH-DSPK 100K-1 | 100 | 24 | 18 | 300 | ball bearing | 140 | 100 x 85 | 80 x 60 | 9 |
| BH-DSPK 100K-3 | 100 | 24 | 18 | 300 | ball bearing | 140 | 140 x 110 | 105 x 75–80 | 11 |
| BH-DSPK 101K-1 * | 100 | 40 | 20 | 600 | ball bearing | 140 | 100 x 85 | 80 x 60 | 9 |
| BH-DSPK 101K-3 * | 100 | 40 | 20 | 600 | ball bearing | 140 | 140 x 110 | 105 x 75–80 | 11 |
| BH-DSPK 120K-1 | 120 | 33 | 25 | 600 | ball bearing | 162 | 100 x 85 | 80 x 60 | 9 |
| BH-DSPK 120K-3 | 120 | 33 | 25 | 600 | ball bearing | 162 | 140 x 110 | 105 x 75–80 | 11 |
| BH-DSPK 125K * | 125 | 50 | 25 | 900 | ball bearing | 170 | 140 x 110 | 105 x 75–80 | 11 |
| BH-DSPK 150K | 150 | 33 | 25 | 800 | ball bearing | 197 | 140 x 110 | 105 x 75–80 | 11 |
| BH-DSPK 200K | 200 | 33 | 25 | 900 | ball bearing | 245 | 140 x 110 | 105 x 75–80 | 11 |

* Wheels with wide tread that can also run outside of the rails.