

Cast iron and steel wheels and castors



7

Selection tool

Cast iron and steel wheels and castors



| Series | G | SVS |
|--|----------------|----------------------|
| Tread / wheel centre | Grey cast iron | Heat-treatable steel |
| Tread and tyre hardness | 180–220 HB | 190–230 HB |
| Wheel Ø | 80–250 mm | 65–300 mm |
| Load capacity up to | 1,400 kg | 15,000 kg |
| Heat resistance | optional | upon request |
| Use on concrete floors | – | – |
| For a description of the wheel, refer to | page 376 | page 382 |
| For information about swivel and fixed castors, refer to | page 377–381 | page 383–384 |

✓ yes – no

SVS series

Super heavy-duty solid steel wheels



750–15,000 kg

Tread and tyre hardness
 190–230 HB

Smooth operation / floor preservation
 sufficient

Rolling resistance
 excellent

Wear resistance
 excellent

- Wheel:**
- heat-treatable steel, machined, hardness 190–230 HB
 - slightly crowned tread
 - lightly-oiled surface
 - extremely low rolling resistance
 - easy operation on smooth surfaces
 - outstanding wear resistance
 - extremely high static and dynamic load capacity

- Other features:**
- chemical resistance to many aggressive substances
 - operating temperature: -20 °C to +120 °C
 - consider the surface pressure on sensitive floors due to high point loads

- Additional details:**
- wheel series: page 70
 - tread: page 59
 - bearing types: page 84–85
 - chemical resistance: page 51

| Wheels | Wheel Ø (D) [mm] | Wheel width (T2) [mm] | Load capacity [kg] | Bearing type | Axle bore Ø (d) [mm] | Hub length (T1) [mm] |
|---------------------|---------------------|--------------------------|-----------------------|--------------|-------------------------|-------------------------|
| SVS 65/20K | 65 | 40 | 750 | ball bearing | 20 | 45 |
| SVS 80/20K | 80 | 40 | 1,100 | ball bearing | 20 | 45 |
| SVS 100/25K | 100 | 40 | 1,700 | ball bearing | 25 | 45 |
| SVS 127/30K | 125 | 55 | 2,750 | ball bearing | 30 | 60 |
| SVS 150/45K | 150 | 55 | 4,000 | ball bearing | 45 | 60 |
| SVS 201/50K | 200 | 55 | 6,000 | ball bearing | 50 | 60 |
| SVS 200/60K | 200 | 80 | 7,000 | ball bearing | 60 | 90 |
| SVS 250/70K | 250 | 65 | 10,000 | ball bearing | 70 | 75 |
| SVS 300/100K | 300 | 90 | 15,000 | ball bearing | 100 | 100 |

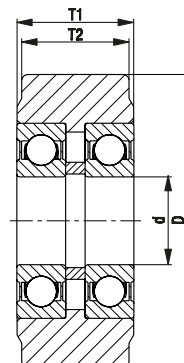
Other dimensions available upon request

7

Versions / options



| | with spherical roller bearing | other versions |
|----------------------------|-------------------------------|----------------|
| Technical description page | 85 | |
| Product code suffix | -PR | |
| Available for | upon request | upon request |



LH-SVS, BH-SVS series

Pressed steel castors, heavy-duty design, with top plate, with extra heavy-duty solid steel wheel



700–900 kg

Bracket: LH/BH series

- strong pressed steel, zinc-plated, blue-passivated, Cr6-free
- heavy fork and top plate

Swivel bracket:

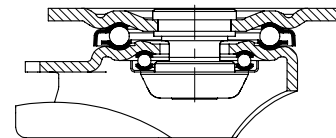
- double ball bearing in the swivel head
- bolted and secured central kingpin, extremely strong
- particularly resistant to shocks and impact due to **four specially-shaped, hardened bearing seats**

Wheel: SVS series

- heat-treatable steel, hardness 190–230 HB, slightly crowned tread

Additional details:

- bracket series: page 92
- wheel series: page 382
- bearing types: page 84–85



| Swivel castors | Fixed castors | Wheel Ø [mm] | Wheel width [mm] | Load capacity [kg] | Bearing type | Total height [mm] | Plate size [mm] | Bolt hole spacing [mm] | Bolt hole Ø [mm] | Offset swivel castor [mm] |
|----------------|---------------|-----------------|---------------------|-----------------------|--------------|----------------------|--------------------|---------------------------|---------------------|------------------------------|
| LH-SVS 65K | BH-SVS 65K | 65 | 40 | 700 | ball bearing | 97 | 100 x 85 | 80 x 60 | 9 | 45 |
| LH-SVS 80K | BH-SVS 80K | 80 | 40 | 700 | ball bearing | 120 | 100 x 85 | 80 x 60 | 9 | 45 |
| LH-SVS 100K-1 | BH-SVS 100K-1 | 100 | 40 | 700 | ball bearing | 140 | 100 x 85 | 80 x 60 | 9 | 45 |
| LH-SVS 100K-3 | BH-SVS 100K-3 | 100 | 40 | 700 | ball bearing | 140 | 140 x 110 | 105 x 75–80 | 11 | 45 |
| LH-SVS 127K | BH-SVS 127K | 125 | 55 | 900 | ball bearing | 170 | 140 x 110 | 105 x 75–80 | 11 | 55 |

7

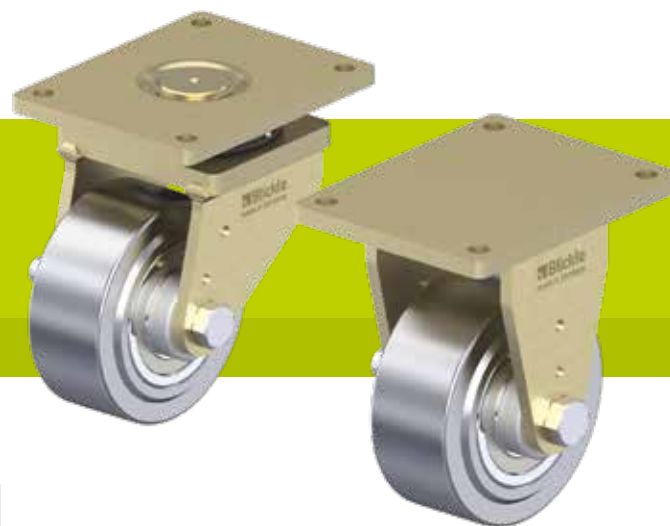
Versions / options



| | directional lock (separate) 1 x 360° | directional lock (separate) 1 x 360° | directional lock (separate) 1 x 360° | with steel foot guard | truck lock |
|----------------------------|--|--------------------------------------|--------------------------------------|-----------------------------|----------------|
| Technical description page | 115 | 115 | 115 | 116 | 112 |
| Product code suffix | RI-04.01 | RI-04.03 | RI-05.03 | -FS | FF 125 |
| Available for | wheel Ø 80–100 mm with plate 100x85 mm | wheel Ø 100 mm with plate 140x110 mm | wheel Ø 125 mm | wheel Ø 125 mm upon request | wheel Ø 125 mm |

LS-SVS, BS-SVS series

Welded steel extra heavy-duty castors, extra heavy-duty swivel head, with extra heavy-duty wheel made of solid steel



1,700–12,000 kg

Bracket: LS/BS series

- particularly robust welded steel construction, zinc-plated, yellow-passivated, Cr6-free

Swivel bracket:

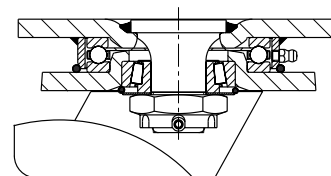
- axial grooved ball bearing ISO 104 and tapered roller bearing ISO 355 in the swivel head
- bolted and secured welded central kingpin, extremely strong
- dust and splash-proof
- grease nipple

Wheel: SVS series

- heat-treatable steel, hardness 190–230 HB, slightly crowned tread

Additional details:

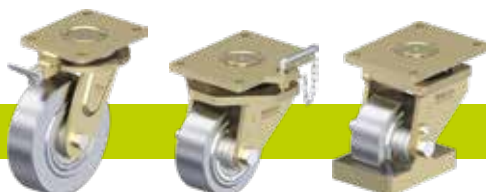
- bracket series: page 94
- wheel series: page 382
- bearing types: page 84–85



| Swivel castors | Fixed castors | Wheel Ø [mm] | Wheel width [mm] | Load capacity [kg] | Bearing type | Total height [mm] | Plate size [mm] | Bolt hole spacing [mm] | Bolt hole Ø [mm] | Offset swivel castor [mm] |
|----------------|----------------|-----------------|---------------------|-----------------------|--------------|----------------------|--------------------|---------------------------|---------------------|------------------------------|
| LS-SVS 100K | BS-SVS 100K | 100 | 40 | 1,700 | ball bearing | 145 | 140 x 110 | 105 x 75–80 | 11 | 50 |
| LS-SVS 127K | BS-SVS 127K | 125 | 55 | 1,750 | ball bearing | 170 | 140 x 110 | 105 x 75–80 | 11 | 50 |
| LS-SVS 150K-35 | BS-SVS 150K-35 | 150 | 55 | 3,000 | ball bearing | 205 | 175 x 140 | 140 x 105 | 14 | 65 |
| LS-SVS 201K | BS-SVS 201K | 200 | 55 | 3,000 | ball bearing | 255 | 175 x 140 | 140 x 105 | 14 | 65 |
| LS-SVS 200K | BS-SVS 200K | 200 | 80 | 6,000 | ball bearing | 280 | 255 x 200 | 210 x 160 | 18 | 75 |
| LS-SVS 250K | BS-SVS 250K | 250 | 65 | 10,000 | ball bearing | 380 | 400 x 300 | 340 x 240 | 26 | 110 |
| LS-SVS 300K | BS-SVS 300K | 300 | 90 | 12,000 | ball bearing | 430 | 400 x 300 | 340 x 240 | 26 | 110 |

7

Versions / options



| | with directional lock 4 x 90° | with directional lock 4 x 90° (inserted by hand) | with steel foot guard |
|----------------------------|-------------------------------|--|-----------------------|
| Technical description page | 115 | 115 | 116 |
| Product code suffix | -RI4 | -RI4H | -FS |
| Available for | wheel Ø 100–200x55 mm | wheel Ø 200x80–300 mm upon request | wheel Ø 100–200 mm |